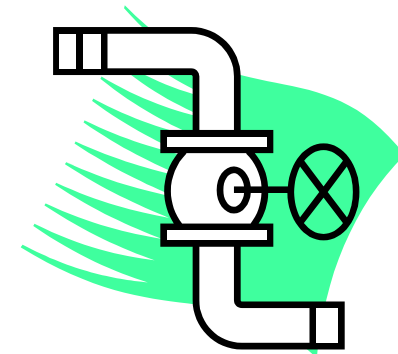




Molasses treatment for yeast industry



**Biotechnologie
Kempe GmbH**

Plant construction

Autor : E. Kempe



What we deliver :

- ✓ Basic Engineering

- construction drawings for tanks and sterilization tube
 - process documentation
 - equipment documentation
 - pipng and instrumentation documentation
 - electrical documentation

- ✓ Hard ware

- Control fittings
 - Pumps
 - Heat exchangers
 - Agitators
 - Measuring equipment and process control system



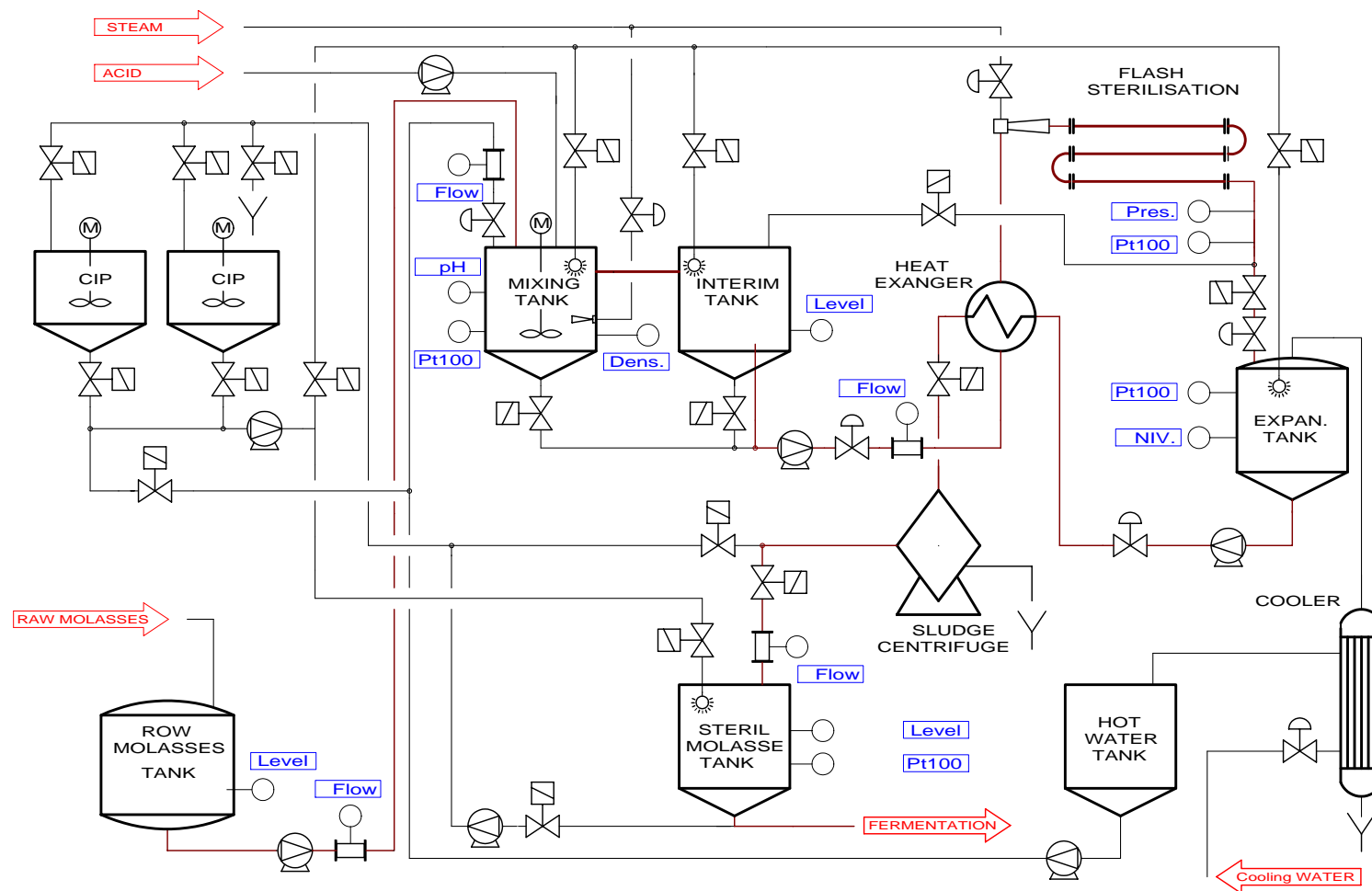
Process Data

- 5.000 - 12.000 l/h diluted molasses from 38° to 42° Bx (wählbar) produced from raw molasses from 70° to 80° Bx
- Sterilizationtemperature: max. 130 °C
- Condensation of all resulting vapours to a condensation temperature > 10 °C than existing cooling water temperature
- Cleaning by full automatic CIP station
- All sections of molasses treatment station are designed to work full automatic
- Space requirement :

area:	ca. 60 m ²
space height:	min. 4,5 m



Flow sheet





Point of installation : JSC Enzym * L'viv , Ukraine



Compact design of a molasses treatment plant



Point of installation : JSC Enzym * L'viv , Ukraine



Panel for
hand operation



CIP Station

Sterilization tube